



## **RADON TESTING AND MITIGATION PROCEDURE (SAF-P010)**

Clarksville-Montgomery County School System

---

### **1.0 SCOPE:**

- 1.1 This procedure outlines the process for conducting radon testing within the Clarksville-Montgomery County School System owned facilities.

The online version of this procedure is official. Therefore, all printed versions of this document are unofficial copies.

### **2.0 RESPONSIBILITY:**

- 2.1 Safety and Health Director

### **3.0 APPROVAL AUTHORITY:**

- 3.1 Chief Human Resources Officer

### **4.0 DEFINITIONS:**

- 4.1 CMCSS: Clarksville-Montgomery County School System
- 4.2 EPA: Environmental Protection Agency
- 4.3 EPA Recommended Action Level: the EPA recommends that action be taken to reduce levels if the concentration of radon is 4 pCi/L or higher. Test results can be affected by any number of factors. Because of this, any room or building with preliminary readings higher than 4 picocuries should be retested.
- 4.4 Radon Mitigation Measures: Initial radon mitigation measures include inspection for and sealing all crack and/or penetrations in the floor and increasing the circulation of outside air through the vents and heating and air systems. As a second measure, venting systems can be installed that vent radon gas from below the ground to the outside, where it is quickly diluted to very low levels if other measures do not bring the levels down to 4pCi/L or lower.
- 4.5 Test Types: A test for radon levels of less than 90 days is a short-term test and a test of 90 days or longer is considered a long-term test.

### **5.0 PROCEDURE:**

- 5.1 Radon Testing will be conducted in accordance with guidelines in CMCSS Administrative Policy SAF-A011.
- 5.2 EPA Approved Radon Monitors will be placed by Safety and Health Staff per SAF-A011. Specific areas within each facility will be determined by the Safety and Health Department.
- 5.3 Results of the analysis will be reviewed by Safety and Health Staff.
- 5.4 Any specific area with a test result which exceeds the EPA Recommended Action level will be retested at the next available time with a long term test per EPA Recommendations.
- 5.5 Any specific area continues to exceed the EPA Recommended Action level at a retest will have initial radon mitigation measures applied.



## **RADON TESTING AND MITIGATION PROCEDURE (SAF-P010)**

Clarksville-Montgomery County School System

---

- 5.6 Upon completion of initial radon mitigation measures for a specific area, retesting of the area will be conducted at the next available time.

### **6.0 ASSOCIATED DOCUMENTS:**

- 6.1 EPA Guidance <http://www.epa.gov/radon/>

### **7.0 RECORD RETENTION TABLE:**

<u>Identification</u>	<u>Storage</u>	<u>Retention</u>	<u>Disposition</u>	<u>Protection</u>
Radon Testing Laboratory Results	Maintenance Department	20 years	Shred	Secured Building
Radon Mitigation Measures Records	Maintenance Department	20 years	Shred	Secured Building

### **8.0 REVISION HISTORY:**

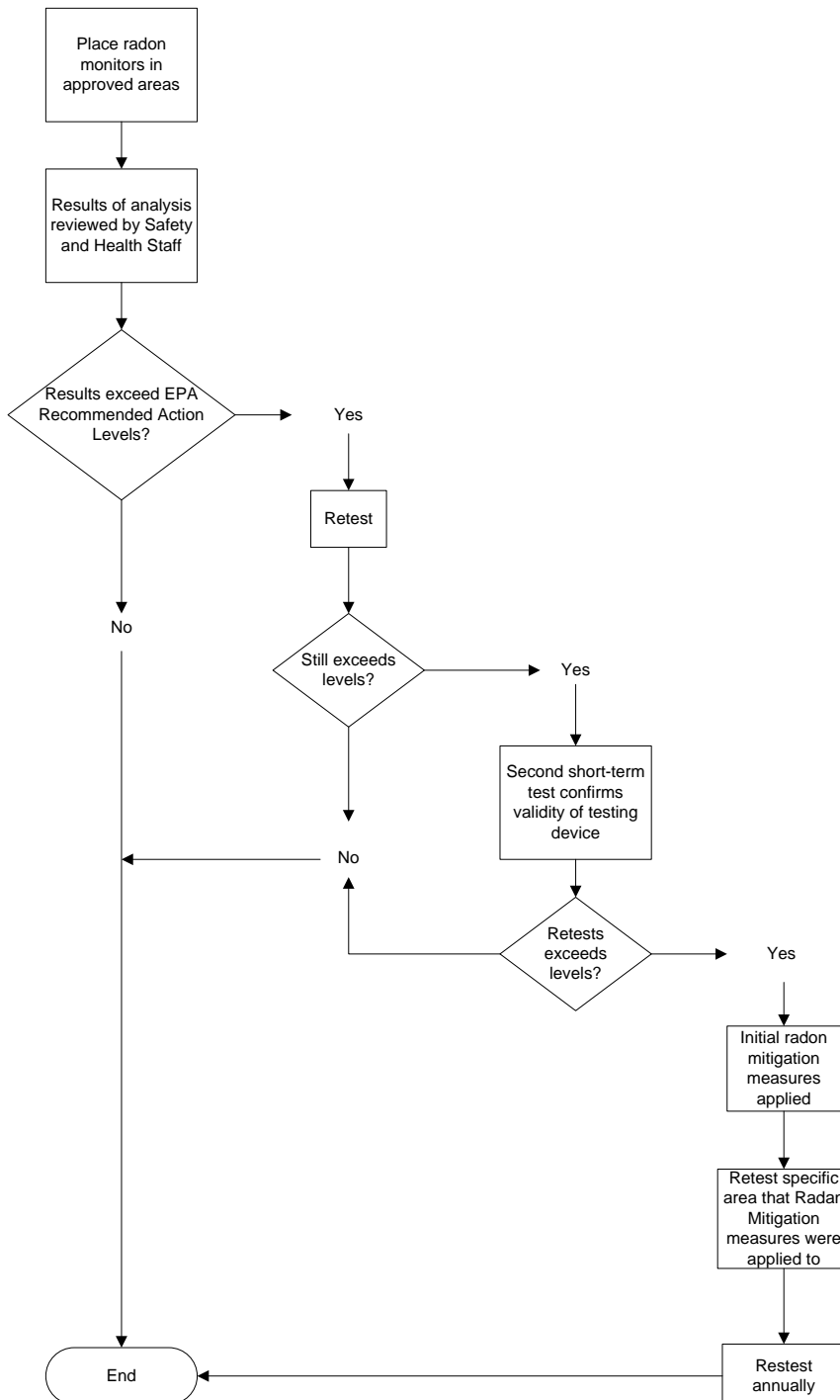
<u>Date:</u>	<u>Rev:</u>	<u>Description of Revision:</u>
2/8/16		Initial Release. Replaced OPS-P008
8/22/17	A	Random testing every five years no longer conducted. Schools will be tested within one year after any construction.

### **9.0 FLOWCHART:**

- 9.1 A flowchart detailing this process can be found below.

## **RADON TESTING AND MITIGATION PROCEDURE (SAF-P010)**

Clarksville-Montgomery County School System





**RADON TESTING AND MITIGATION PROCEDURE  
(SAF-P010)**

Clarksville-Montgomery County School System

---

**\*\*\* End of procedure \*\*\***